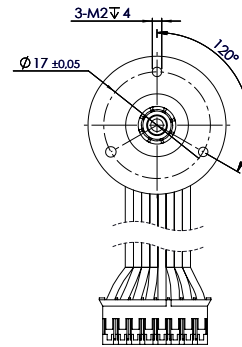
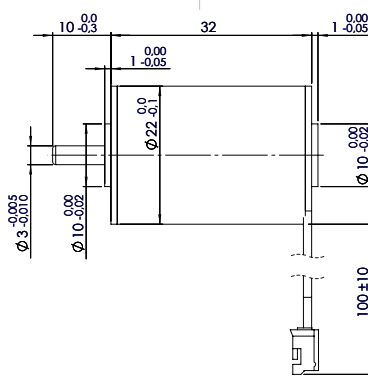
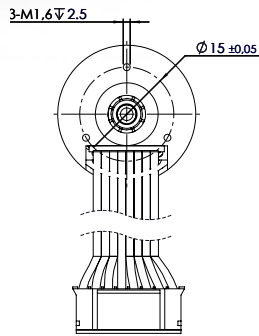




ATOM EC Series - 4 Poles  
**SVTN A 04-2232**

**servotecnica**



16 Watt

Values	Unit	SVTN A 04		
		2232-12..	2232-24..	
<b>Motor Data</b>				
1	Nominal voltage	V	12	24
2	No load speed	rpm	6300	12780
3	No load current	mA	90	120
4	Nominal speed	rpm	4710	11180
5	Nominal torque	mNm	12	12
6	Nominal current	A	0,77	0,8
7	Stall torque	mNm	47,5	95,8
8	Stall current	A	2,79	5,58
9	Max. efficiency	%	67,3	72,8
<b>Characteristics</b>				
10	Terminal resistance*	ff	4,3	4,3
11	Terminal inductance*	mH	0,186	0,186
12	Torque constant	mNm/A	17,6	17,5
13	Speed constant	rpm/V	542	544
14	Speed/torque gradient	rpm/mNm	133	133
15	Mechanical time constant	ms	7,2	7,3
16	Rotor inertia	gcm <sup>2</sup>	5,2	5,2
<b>Mechanical data</b>				
17	Thermal resistance housing-ambient		17,2 K/W	
18	Thermal resistance winding-housing		6 K/W	
19	Thermal time constant winding		12 s	
20	Thermal time constant motor		380 s	
21	Ambient temperature		-40 .+100°C	
22	Max. permissible winding temperature		.+150°C	
23	Max. permissible speed		30000 rpm	
24	Radial play		preloaded	
25	Max. axial load (dynamic)		3,5 N	
26	Max.force for press fits (static)		44 N	
27	Max. radial load, 5mm from flange		15 N	
<b>Other specifications</b>				
28	Number of poles		4	
29	Number of phases		3	
30	Weight		70g	

**Connection**

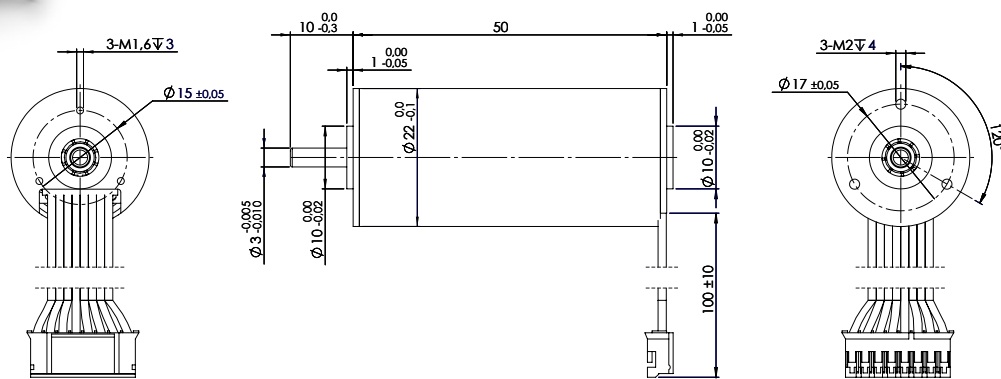
Connection H	(Sensor)	PVC	
Pin 1	Hall sensor HB	AWG26	black
Pin 2	Hall sensor HC	AWG26	black
Pin 3	Hall sensor HA	AWG26	black
Pin 4	GND	AWG26	black
Pin 5	VCC	AWG26	black
Pin 6	Motor winding MA	AWG26	black
Pin 7	Motor winding MB	AWG26	black
Pin 8	Motor winding MC	AWG26	black
Connector			
JST	PHR-8		



# ATOM EC Series - 4 Poles

## SVTN A 04-2250

**servotecnica**



30 Watt

Values	Unit	SVTN A 04	2250-12..	2250-24.. V1	2250-24.. V2
<b>Motor Data</b>					
1	Nominal voltage	V	12	24	24
2	No load speed	rpm	6700	12700	16700
3	No load current	mA	100	130	190
4	Nominal speed	rpm	5653	11400	15233
5	Nominal torque	mNm	30	30	30
6	Nominal current	A	1,87	1,81	2,39
7	Stall torque	mNm	192	302	342
8	Stall current	A	11,4	17	25,3
9	Max. efficiency	%	82,2	83,3	83,4
<b>Characteristics</b>					
10	Terminal resistance*	ff	1,05	1,41	0,95
11	Terminal inductance*	mH	0,08	0,094	0,055
12	Torque constant	mNm/A	17	17,9	13,6
13	Speed constant	rpm/V	563	533	701
14	Speed/torque gradient	rpm/mNm	34,9	42	48,9
15	Mechanical time constant	ms	3,3	4	4,6
16	Rotor inertia	gcm <sup>2</sup>	9	9	9
<b>Mechanical data</b>					
17	Thermal resistance housing-ambient		14,5 K/W		
18	Thermal resistance winding-housing		3,9 K/W		
19	Thermal time constant winding		10,4 s		
20	Thermal time constant motor		776 s		
21	Ambient temperature		-40 .+100°C		
22	Max. permissible winding temperature		.+150°C		
23	Max. permissible speed		30000 rpm		
24	Radial play		preloaded		
25	Max. axial load (dynamic)		3,5 N		
26	Max. force for press fits (static)		44 N		
27	Max. radial load, 5mm from flange		15 N		
<b>Other specifications</b>					
28	Number of poles		4		
29	Number of phases		3		
30	Weight		113g		

### Connection

Connection H	(Sensor)	PVC
Pin 1	Hall sensor HB	AWG26 black
Pin 2	Hall sensor HC	AWG26 black
Pin 3	Hall sensor HA	AWG26 black
Pin 4	GND	AWG26 black
Pin 5	VCC	AWG26 black
Pin 6	Motor winding MA	AWG26 black
Pin 7	Motor winding MB	AWG26 black
Pin 8	Motor winding MC	AWG26 black
Connector		
JST	PHR-8	